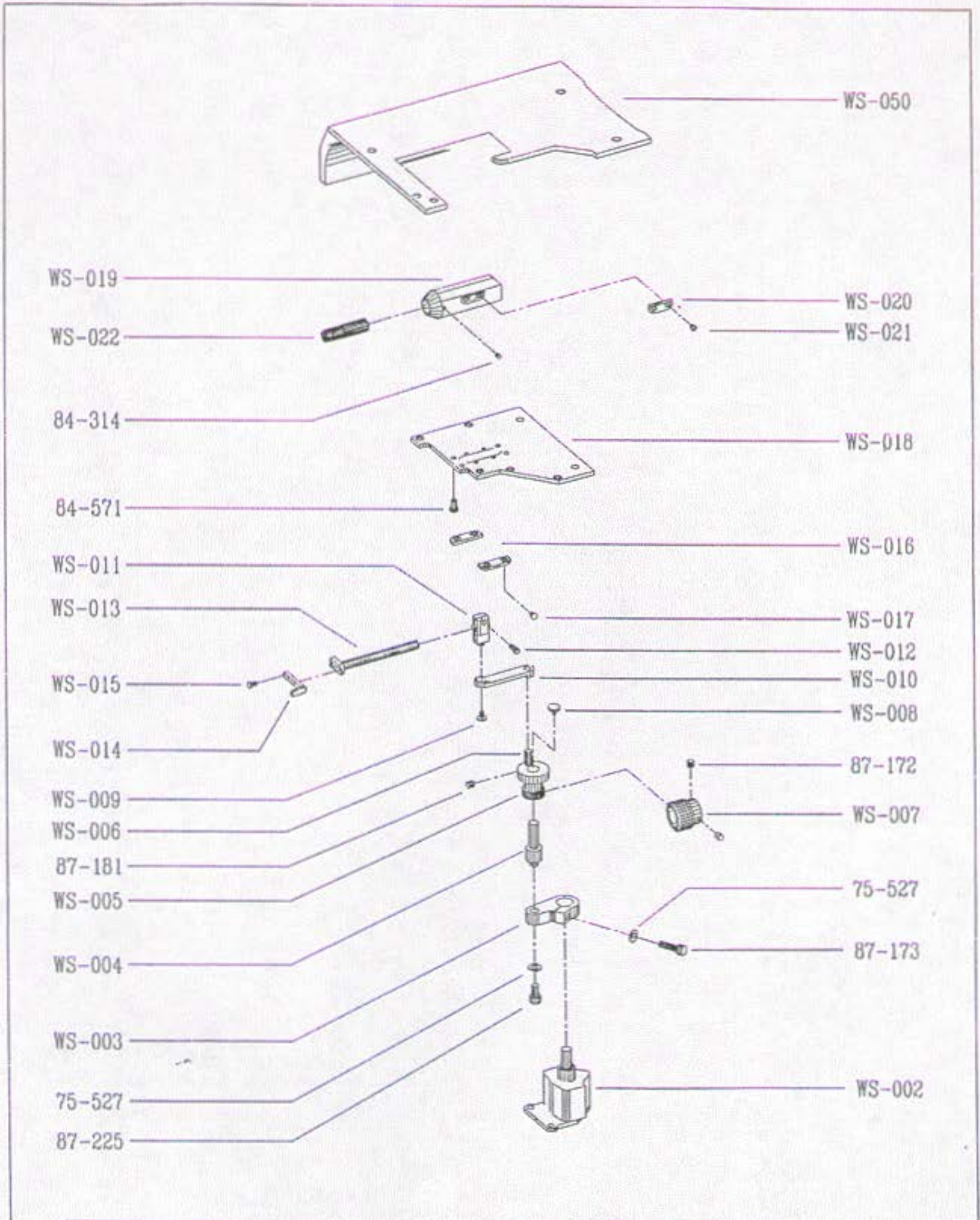
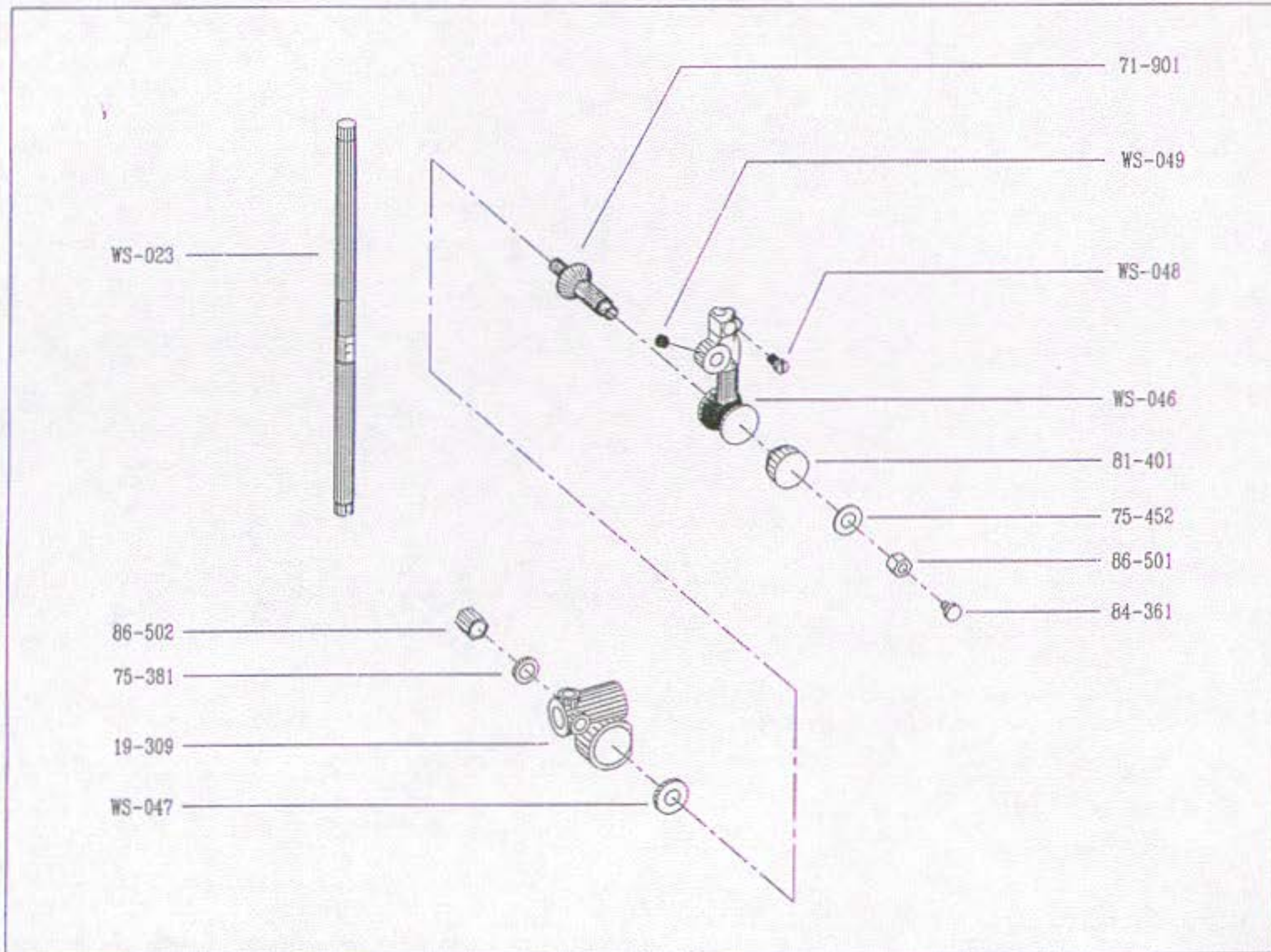


SHELL COMPONENTS

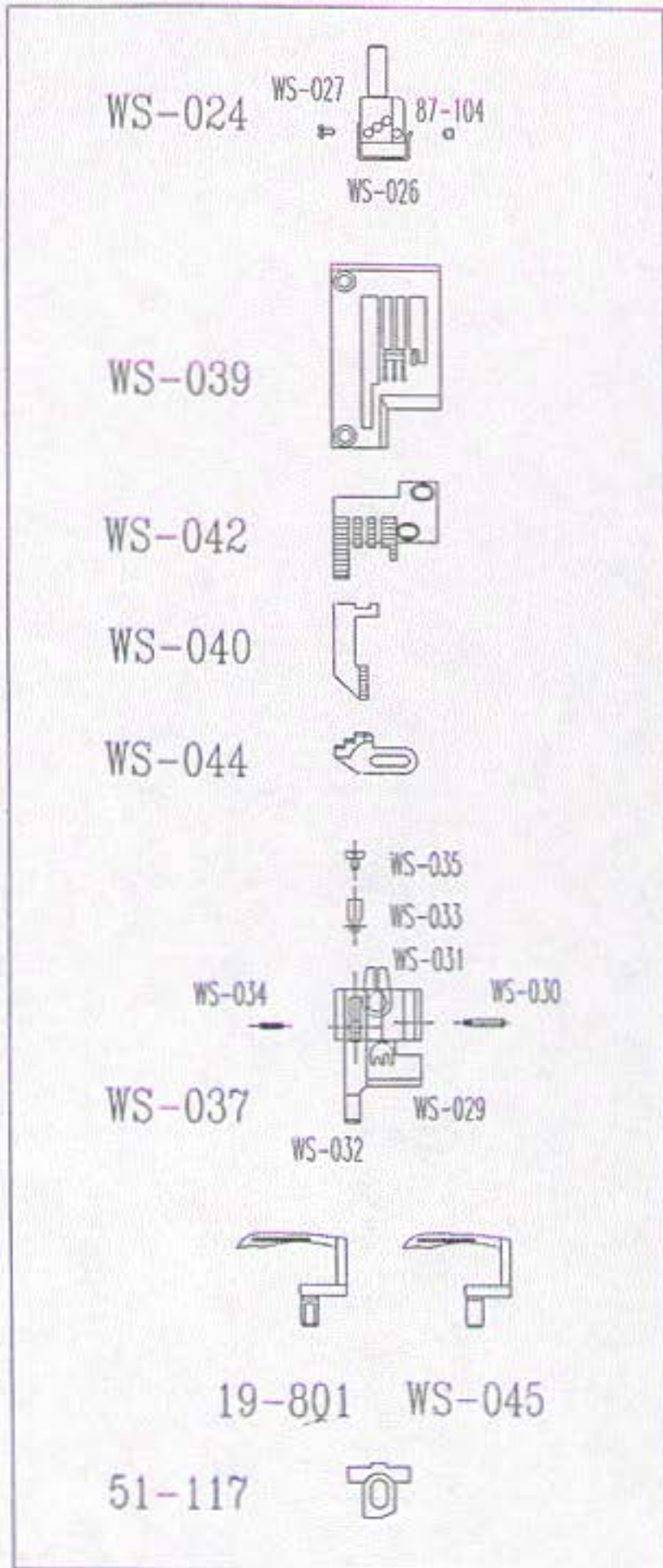


NEEDLE BAR & LOOPER COMPONENTS

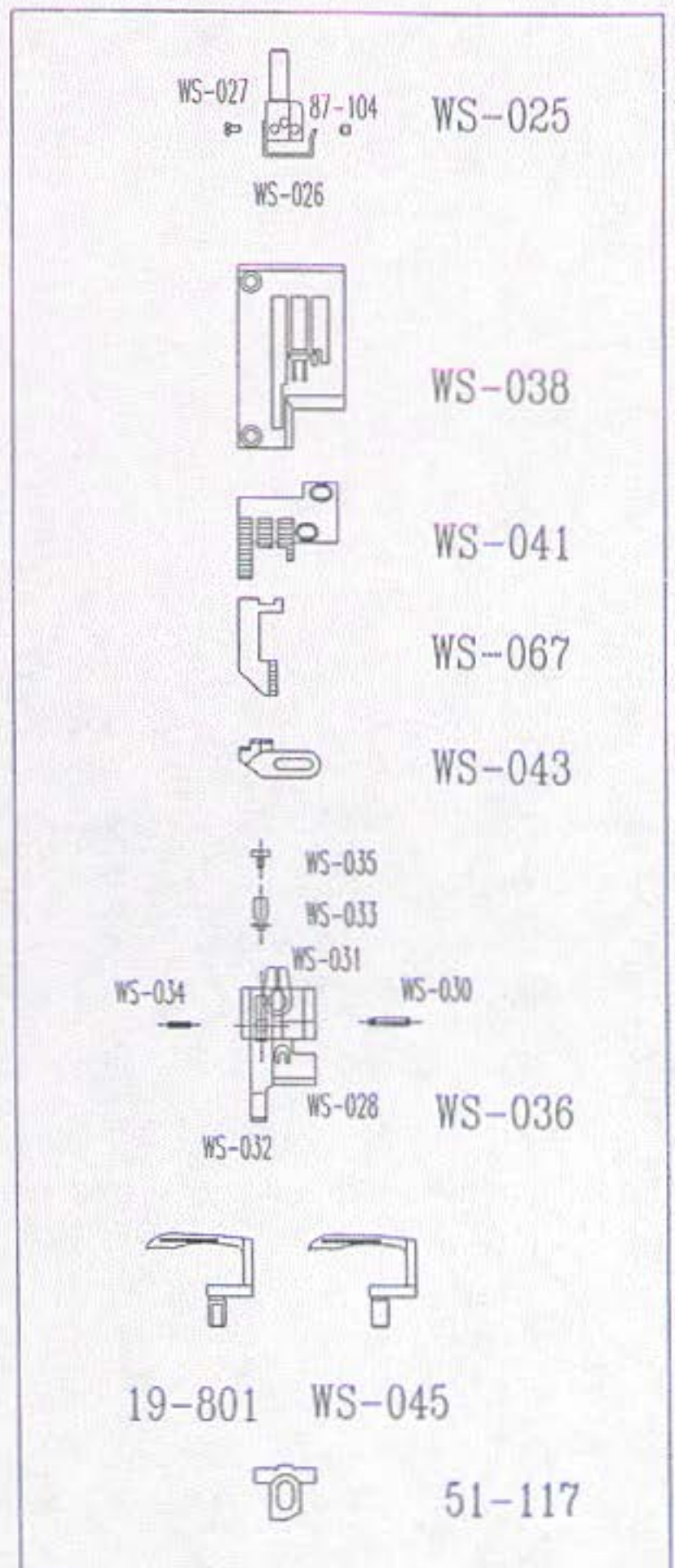


GAUGE PARTS

W 8103-1S



W 8102-1S



W 8102 - 1S / W 8103 - 1S PARTS LIST

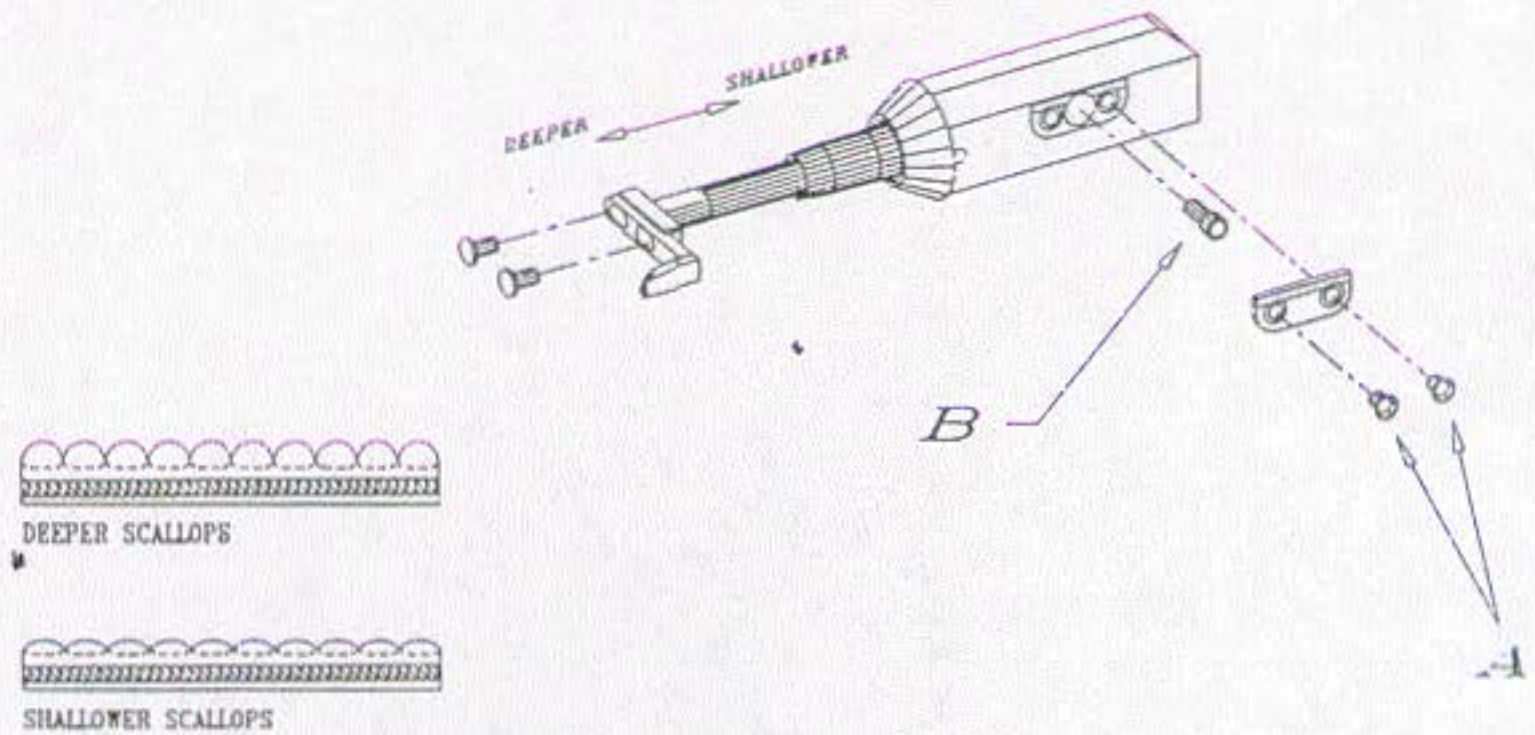
PART NO.	DESCRIPTION	QTY
WS - 001	OIL PUMP (TOP)	1
WS - 002	OIL PUMP SET (COMPLETE)	1
WS - 003	WORM WHEEL SUPPORT BRACKET	1
WS - 004	WORM WHEEL SUPPORT PIN	1
WS - 005	WORM WHEEL	1
WS - 006	WORM WHEEL PIN	1
WS - 007	WORM GEAR	1
WS - 008	WORM WHEEL SCREW	1
WS - 009	LEVER DRIVE SHAFT SCREW	1
WS - 010	LEVER DRIVE SHAFT	1
WS - 011	SHAFT BRACKET	1
WS - 012	SHAFT BRACKET SCREW	1
WS - 013	SHELL SHAFT	1
WS - 014	SCALLOP HOOK	1
WS - 015	SCALLOP HOOK SCREW	2
WS - 016	SHAFT BRACKET GUIDE PLATE	2
WS - 017	SHAFT BRACKET GUIDE PLATE SCREW	4
WS - 018	OIL RESERVOIR TOP COVER	1
WS - 019	SHAFT BOX	1
WS - 020	SHAFT BOX COVER	1
WS - 021	SHAFT BOX COVER SCREW	2
WS - 022	SHELL SHAFT BUSHING	1
WS - 023	NEEDLE BAR	1
WS - 024	NEEDLE CLAMP (2 NEEDLE) 1/8", 1/8"	1
WS - 025	NEEDLE CLAMP (3 NEEDLE) 7/32", 1/8"	1

PART NO.	DESCRIPTION	QTY
WS - 026	NEEDLE CLAMP THREAD GUIDE	1
WS - 027	NEEDLE CLAMP THREAD GUIDE SCREW	1
WS - 028	PRESSER FOOT BODY (2 NEEDLE)	1
WS - 029	PRESSER FOOT BODY (3 NEEDLE)	1
WS - 030	PRESSER FOOT POST PIN	1
WS - 031	PRESSER FOOT POST	1
WS - 032	PRESSER FOOT GUIDE	1
WS - 033	PRESSER FOOT CONNECTING PIN	1
WS - 034	PRESSER FOOT LINK PIN	1
WS - 035	PRESSER FOOT CONNECTING PIN SCREW	1
WS - 036	PRESSER FOOT SET (2 NEEDLE) 1/8", 1/8"	1
WS - 037	PRESSER FOOT SET (3 NEEDLE) 7/32", 1/8"	1
WS - 038	NEEDLE PLATE (2 NEEDLE) 1/8", 1/8"	1
WS - 039	NEEDLE PLATE (3 NEEDLE) 7/32", 1/8"	1
WS - 040	FRONT FEED DOG (3 NEEDLE) 7/32", 1/8"	1
WS - 041	REAR FEED DOG (2 NEEDLE) 1/8", 1/8"	1
WS - 042	REAR FEED DOG (3 NEEDLE) 7/32", 1/8"	1
WS - 043	NEEDLE GUARD (2 NEEDLE) 1/8", 1/8"	1
WS - 044	NEEDLE GUARD (3 NEEDLE) 7/32", 1/8"	1
WS - 045	SHELL STITCH LOOPER	1
WS - 046	LOOPER HOLDER	1
WS - 047	WASHER	1
WS - 048	LOOPER SCREW	2
WS - 049	CONNECTING ROD BALL SCREW	1
WS - 050	UPPER CLOTH PLATE	1

PART NO.	DESCRIPTION	QTY
WS - 067	FRONT FEED DOG (2 NEEDLE) 1/8", 1/8"	1
87-1730-0	SCREW	1
75-5270-0	WASHER	2
87-2250-0	SCREW	1
87-1810-0	SCREW	1
87-1720-0	SCREW	2
84-5710-0	SCREW	4
84-3140-0	SCREW	1
87-1040-0	SCREW	4
84-3610-0	SCREW	1
86-5010-0	NUT	1
75-4520-0	WASHER	1
81-4010-0	TAPERED PIN BUSHING	1
71-9010-0	LOOPER ROCKER TAPERED PIN	1
19-3090-0	LOOPER ROCKER	1
75-3810-0	WASHER	1
86-5020-0	NUT	1
19-8010-0	BOTTOM COVERING LOOPER	1
51-1170-0	REAR FEED DOG HOLDER	1

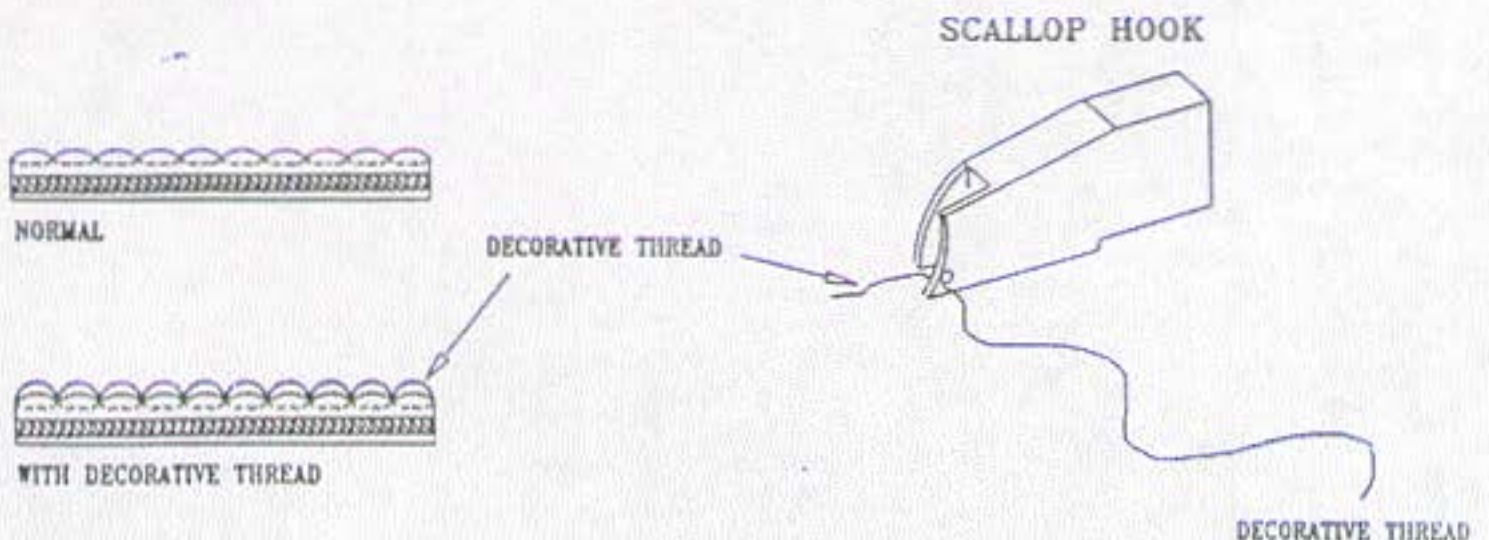
Shell Adjustments

Shells or scallops sewn can be adjusted to requirements, either deeper formed shells or shallower formed shells. To adjust, first loosen the 2 screws (A), remove the shaft box cover and loosen the screw (B). Move the shaft slightly outward for forming deeper shells or move the shaft slightly inward for forming shallower shells. Tighten the screw (B). Ensure that the scallop hook does not hit the presser foot or the needle plate.



Additional Decorative Thread

An additional thread or more than one decorative thread for the scallops can be added to the scallop hook for requirements. Just simply add another thread or threads to the additional tension adjusting nut, through the other thread eyelets and through the hole in the scallop hook.

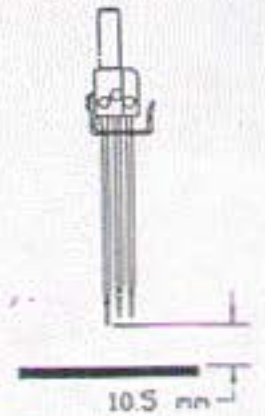


(1) Height of Needle Bar

The distance between the needle plate surface and the needle point at the highest position of the needle bar is 10.5 mm for both gauges of the W 8103-1S and W 8102-1S.

W 8103-1S

W 8102-1S

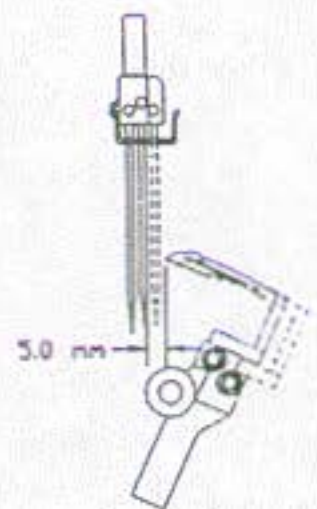
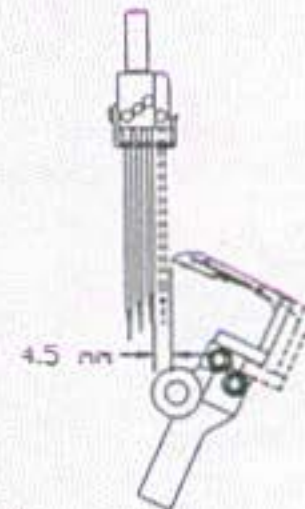


(2) Distance between Loper and Needle

When the needle is at its lowest position, the distance between the covering stitch looper to the right covering stitch needle is 4.5 mm and 5.0 mm for the W 8103-1S and W 8102-1S respectively.

W 8103-1S

W 8102-1S



(3) Adjustment of the Needle Guard

The needle should come into contact lightly with the needle guard at a point of 0.8 mm from the point of the needle when the point of the covering looper is at the rear middle of the right covering needle.

W 8103-1S

W 8102-1S

